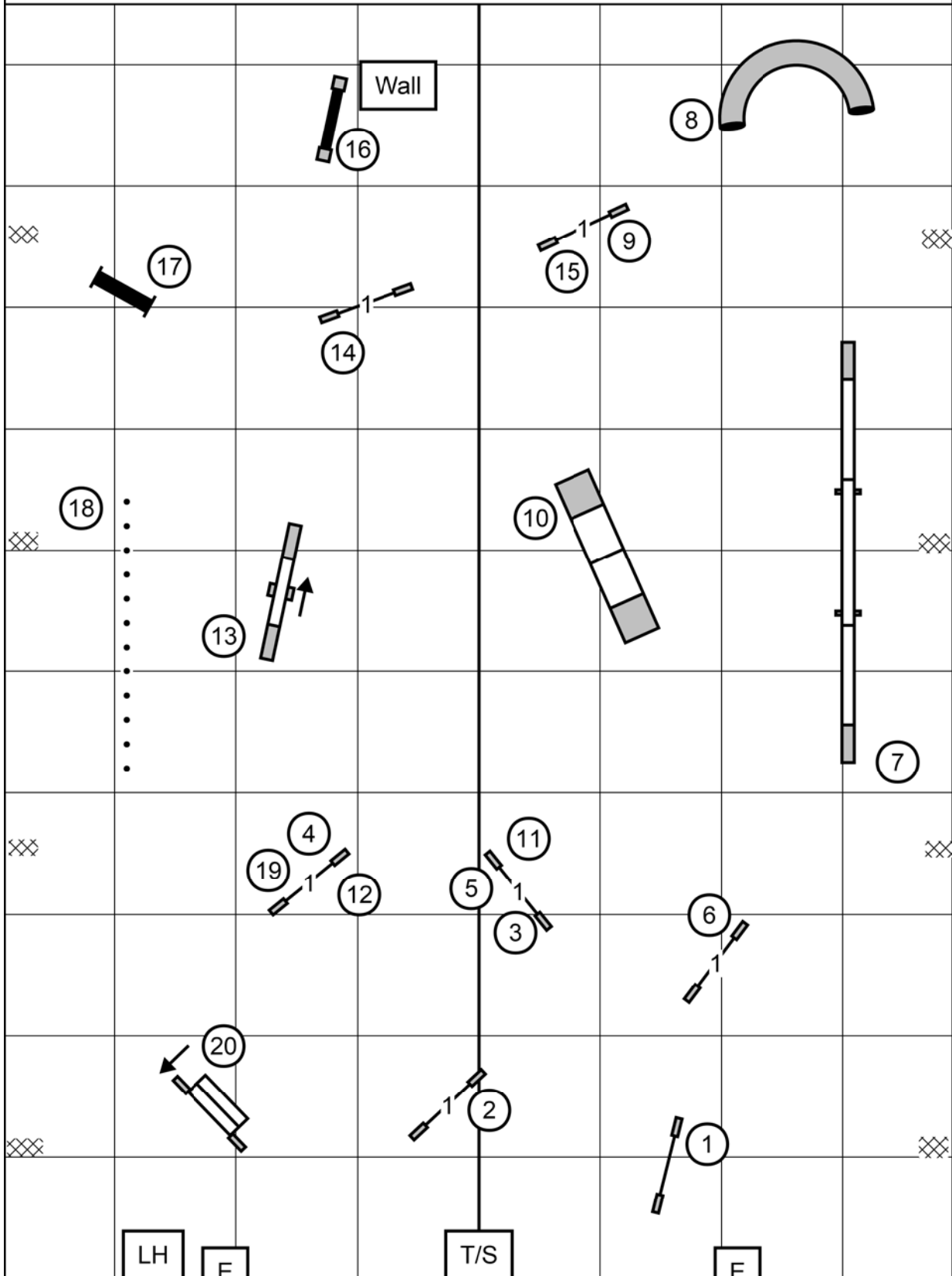
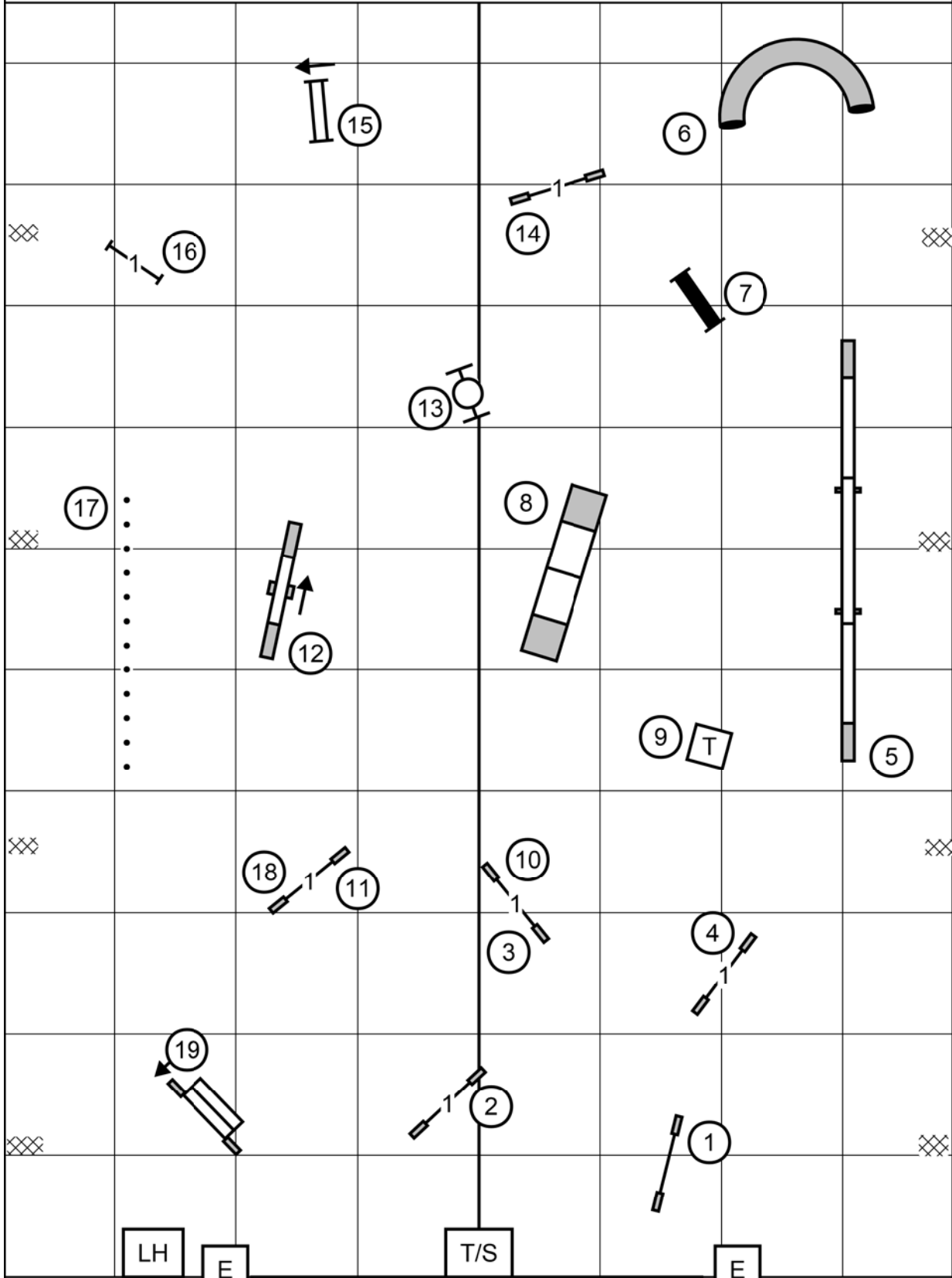


Premier Standard



York County Dog Training Club
 Lewisberry, PA
 Thursday, November 12, 2020
 Inga L. Hooper

Master/Excellent Standard



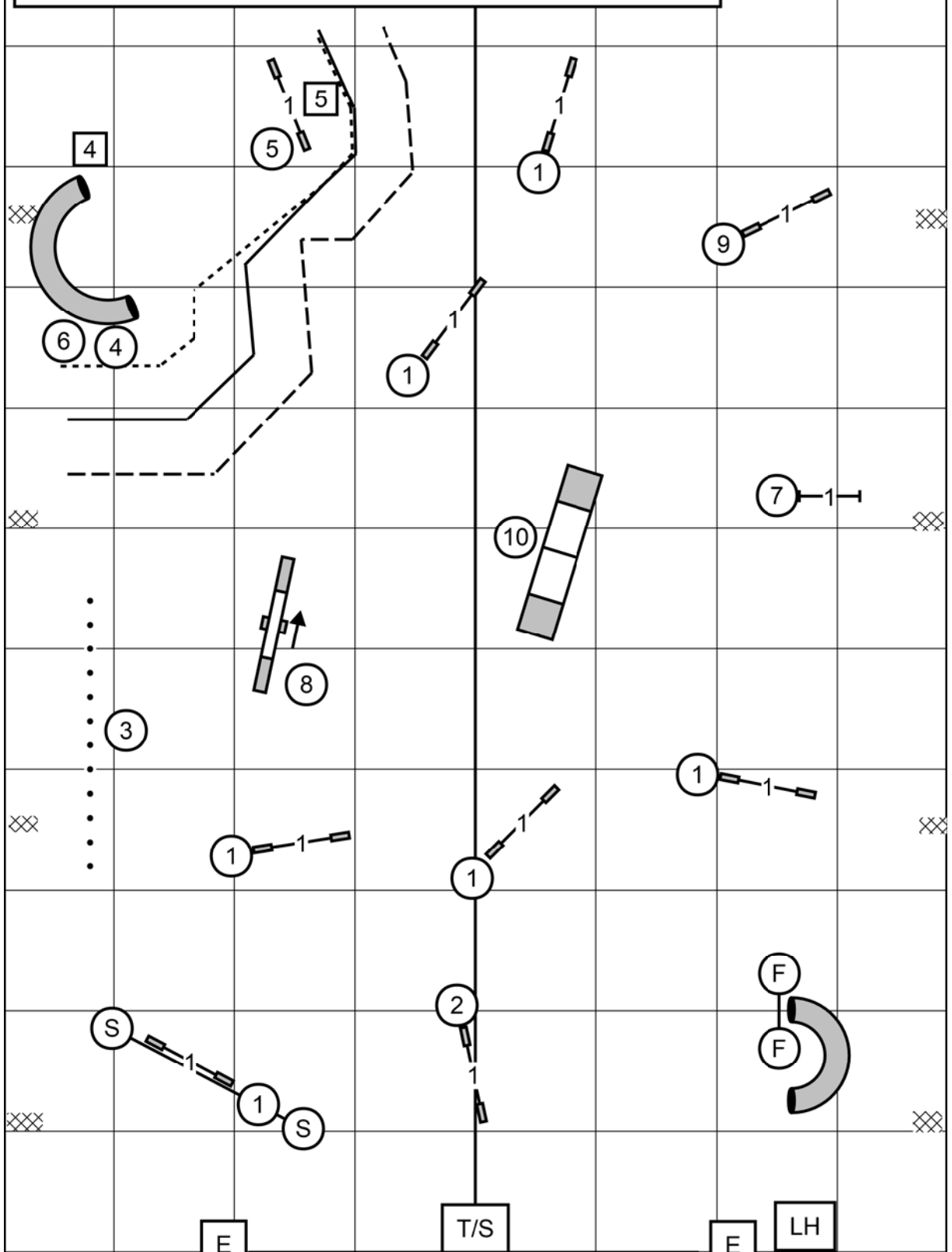
York County Dog Training Club
Lewisberry, PA
Thursday, November 12, 2020
Inga L. Hooper

M/E: 6-4-5 (circles) - dashed line

Open: 6-5 (circles) or 5-4 (squares) - solid line

Novice: 6-5 (circles) or 5-4 (squares) - dotted/solid line

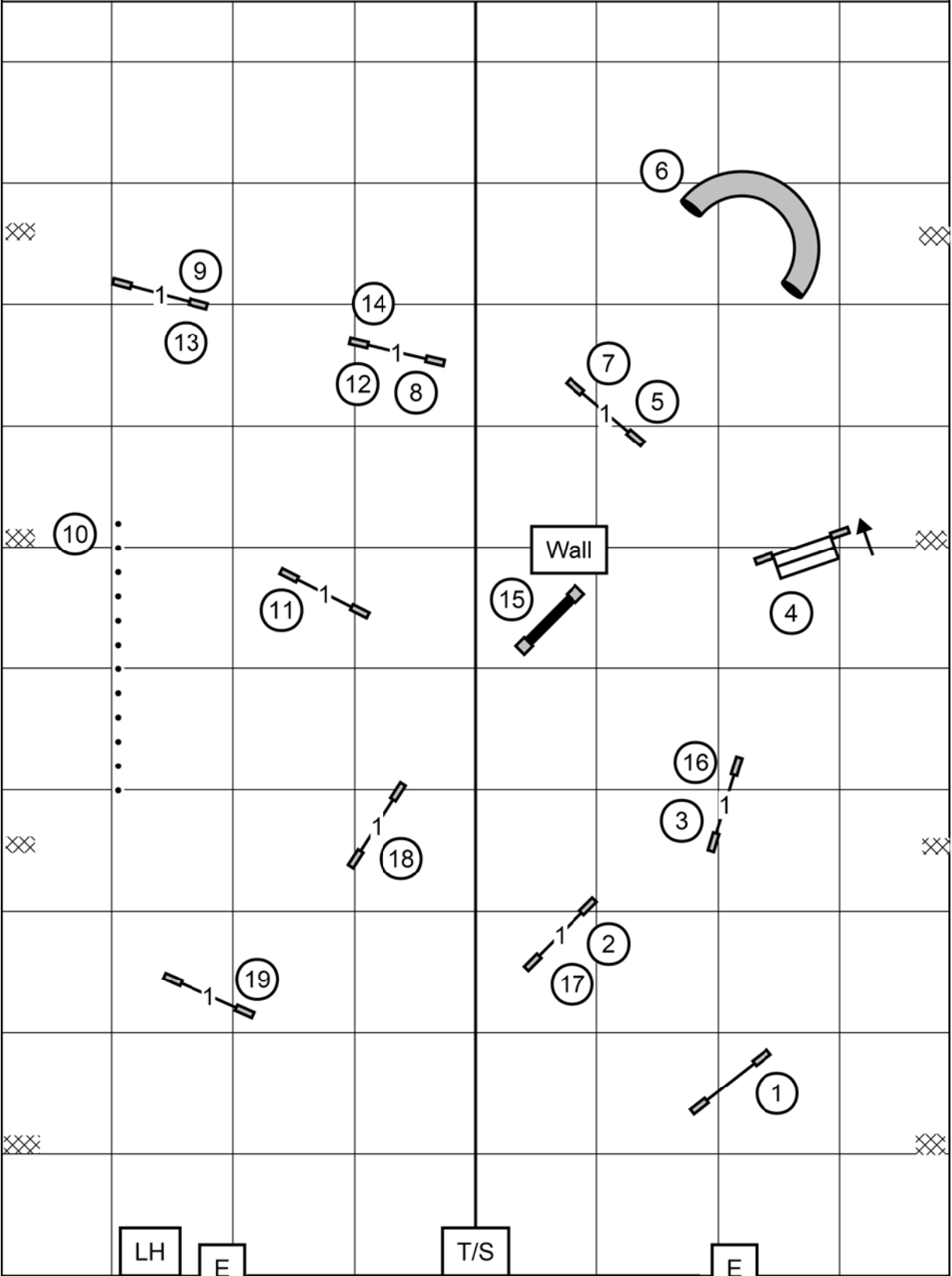
All FAST



York County Dog Training Club

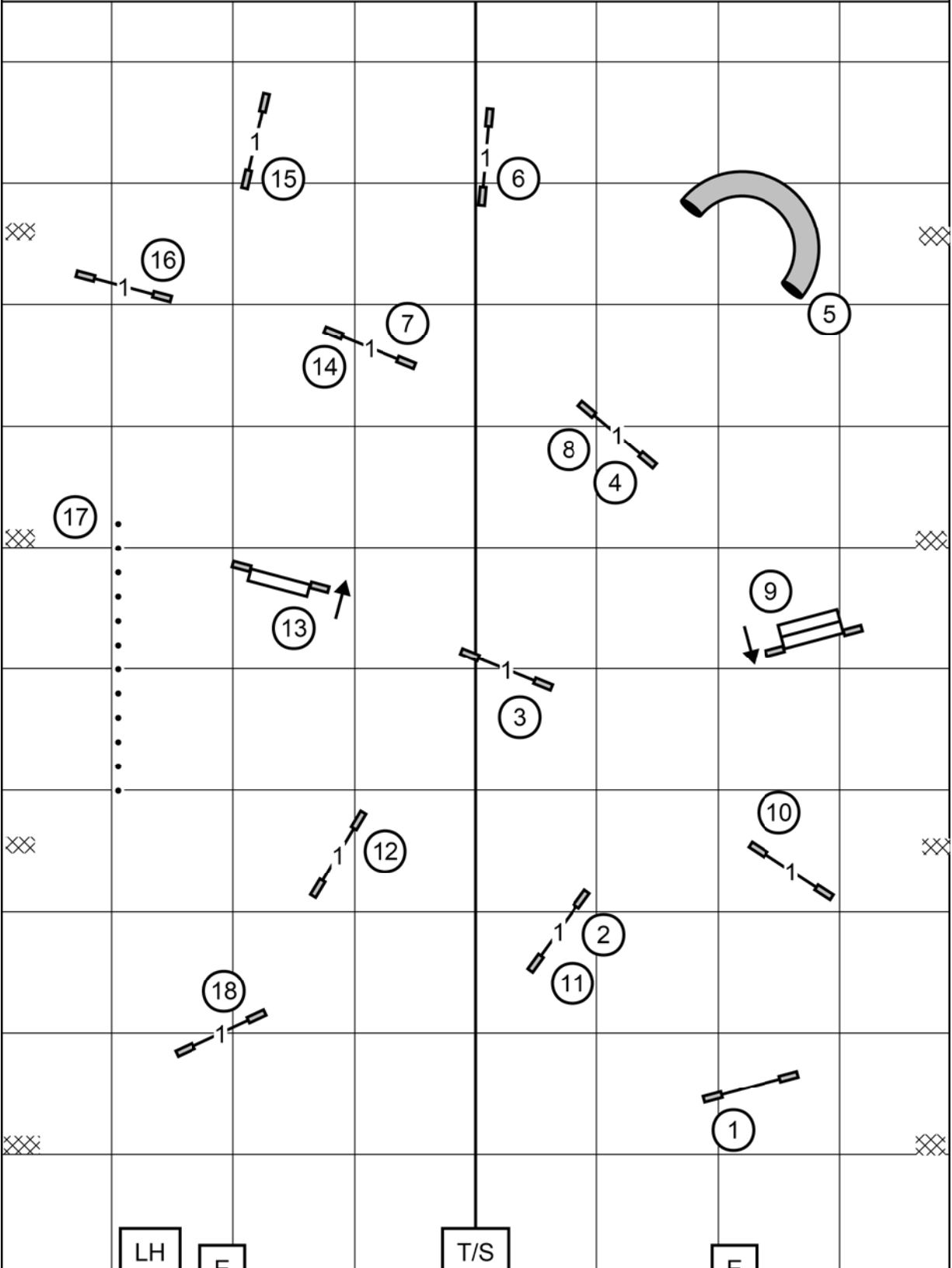
Lewisberry, PA
Thursday, November 12, 2020
Inga L. Hooper

Premier JWW



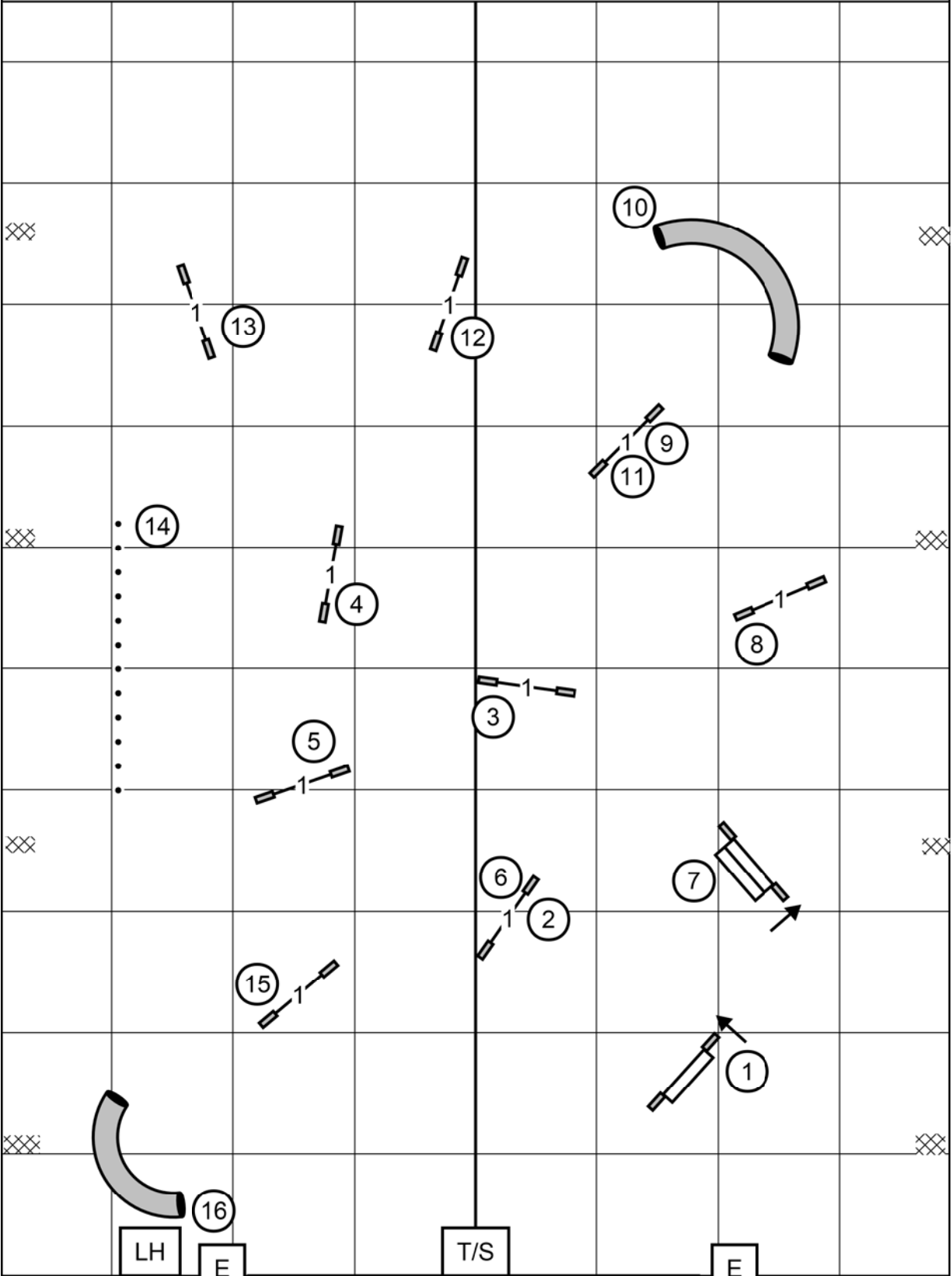
York County Dog Training Club
 Lewisberry, PA
 Thursday, November 12, 2020
 Inga L. Hooper

Master/Excellent JWW



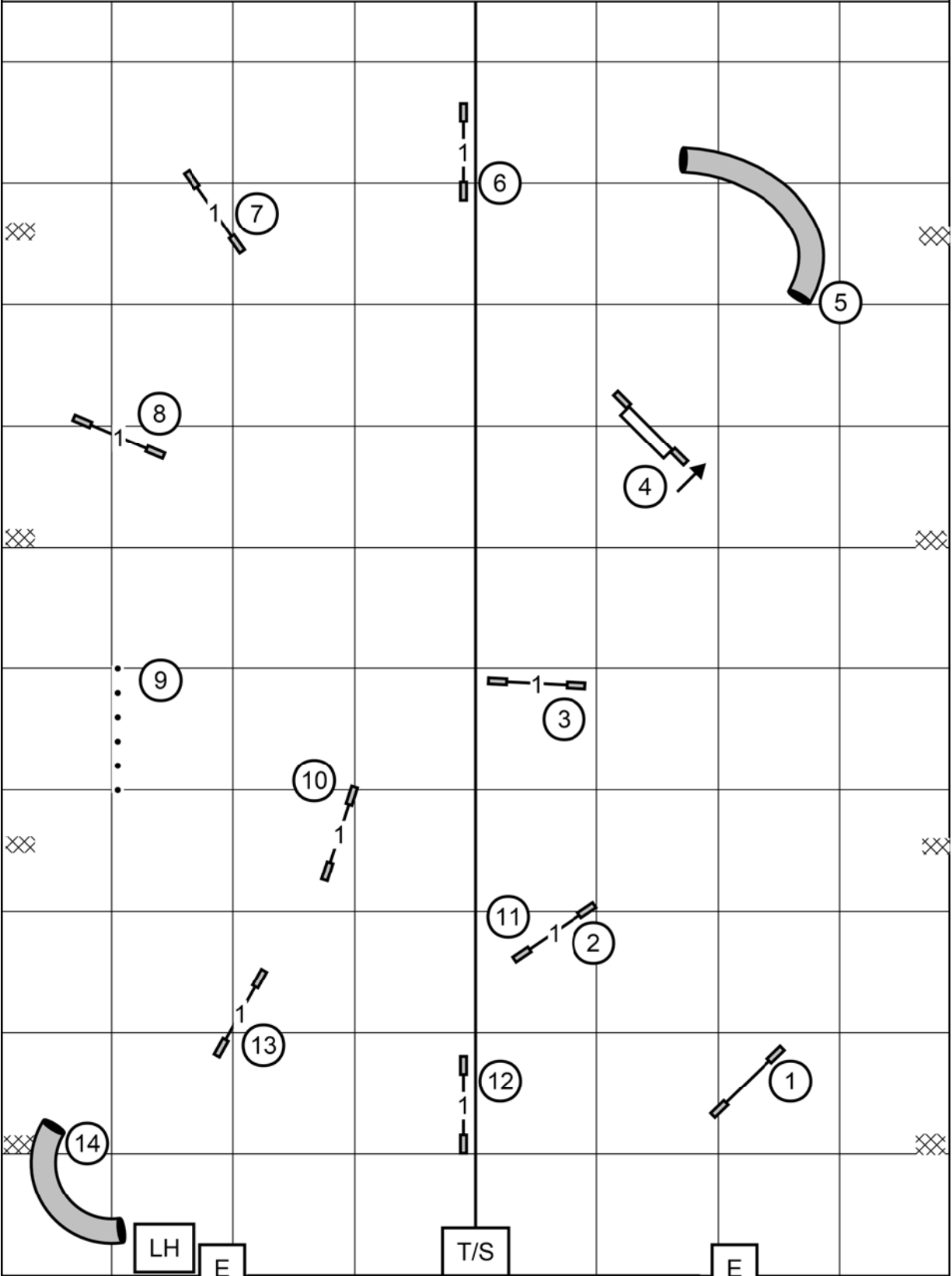
York County Dog Training Club
Lewisberry, PA
Thursday, November 12, 2020
Inga L. Hooper

Open JWW



York County Dog Training Club
Lewisberry, PA
Thursday, November 12, 2020
Inga L. Hooper

Novice JWW



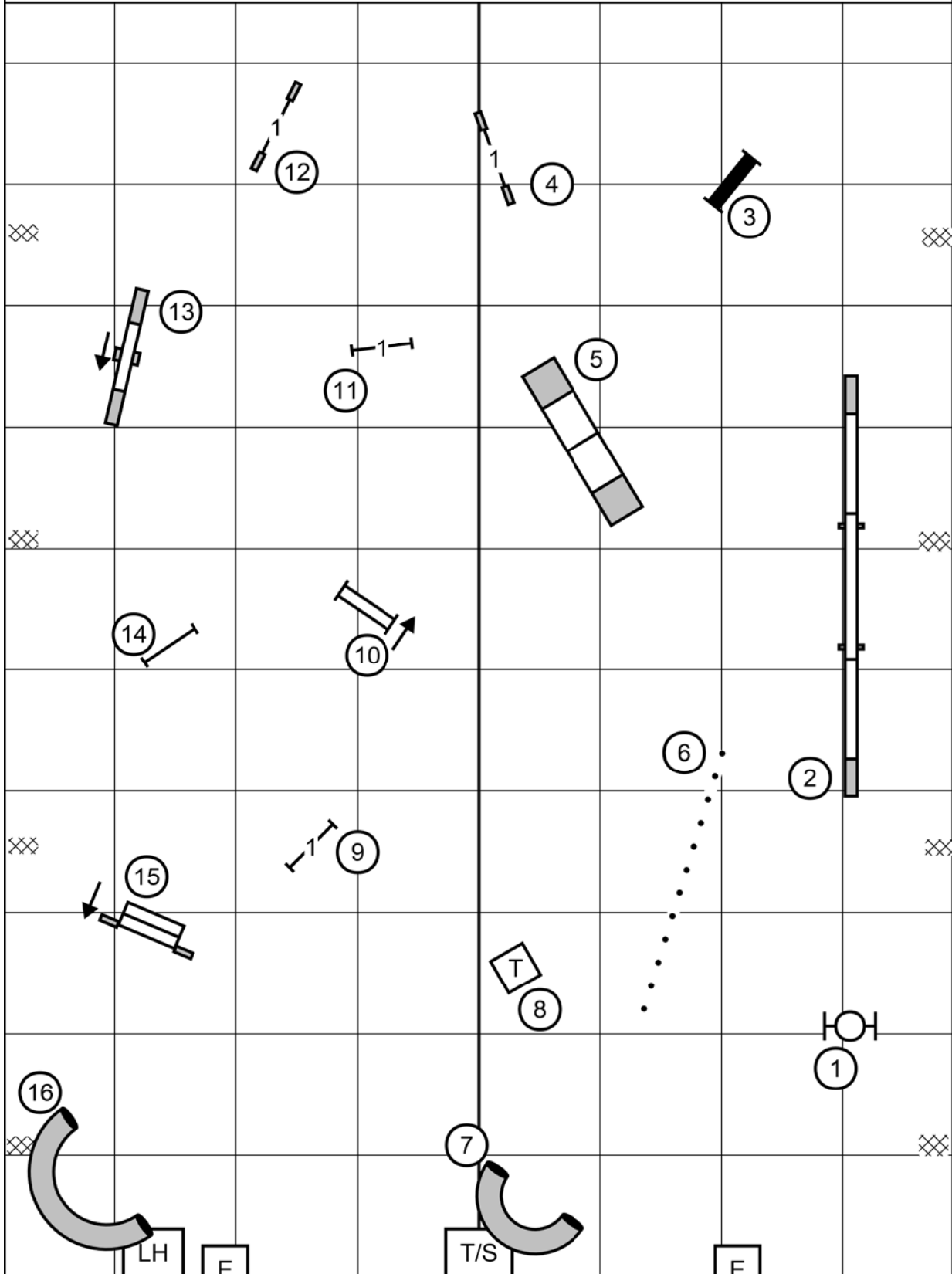
York County Dog Training Club

Lewisberry, PA

Thursday, November 12, 2020

Inga L. Hooper

Open Standard



York County Dog Training Club
 Lewisberry, PA
 Thursday, November 12, 2020
 Inga L. Hooper