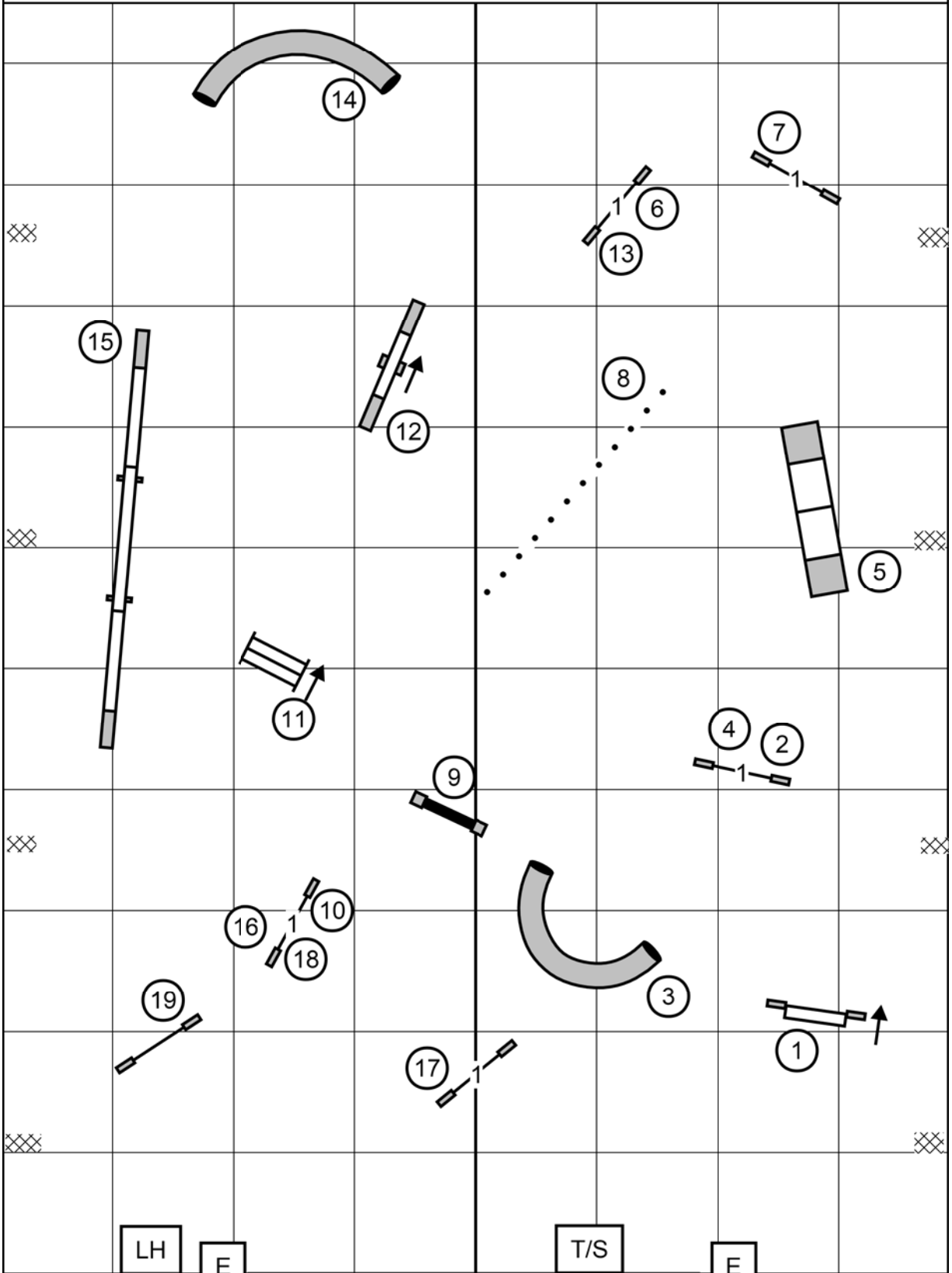
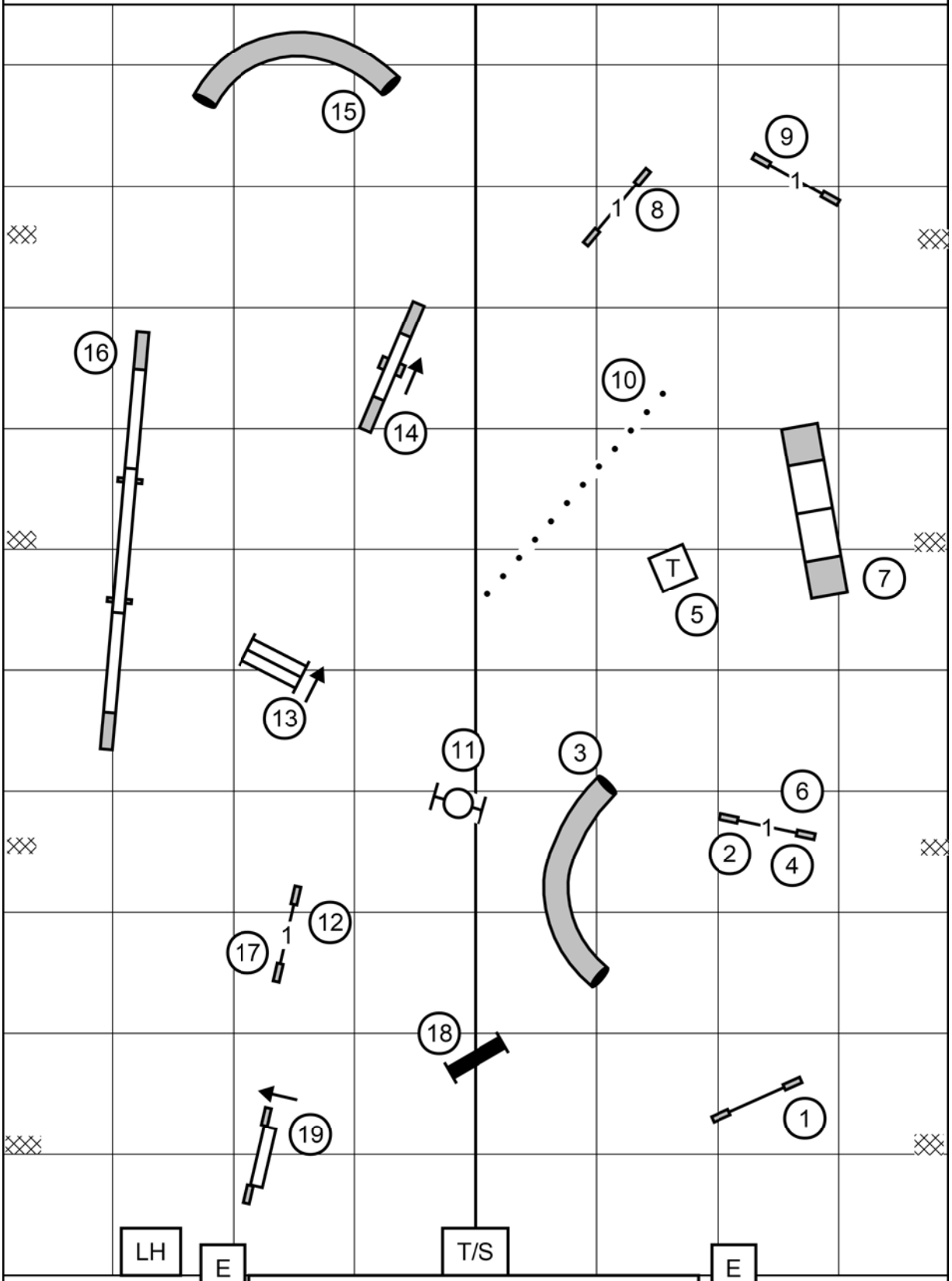


Premier Standard



York County Dog Training Club
 Lewisberry, PA
 Wednesday, November 11, 2020
 Inga L. Hooper

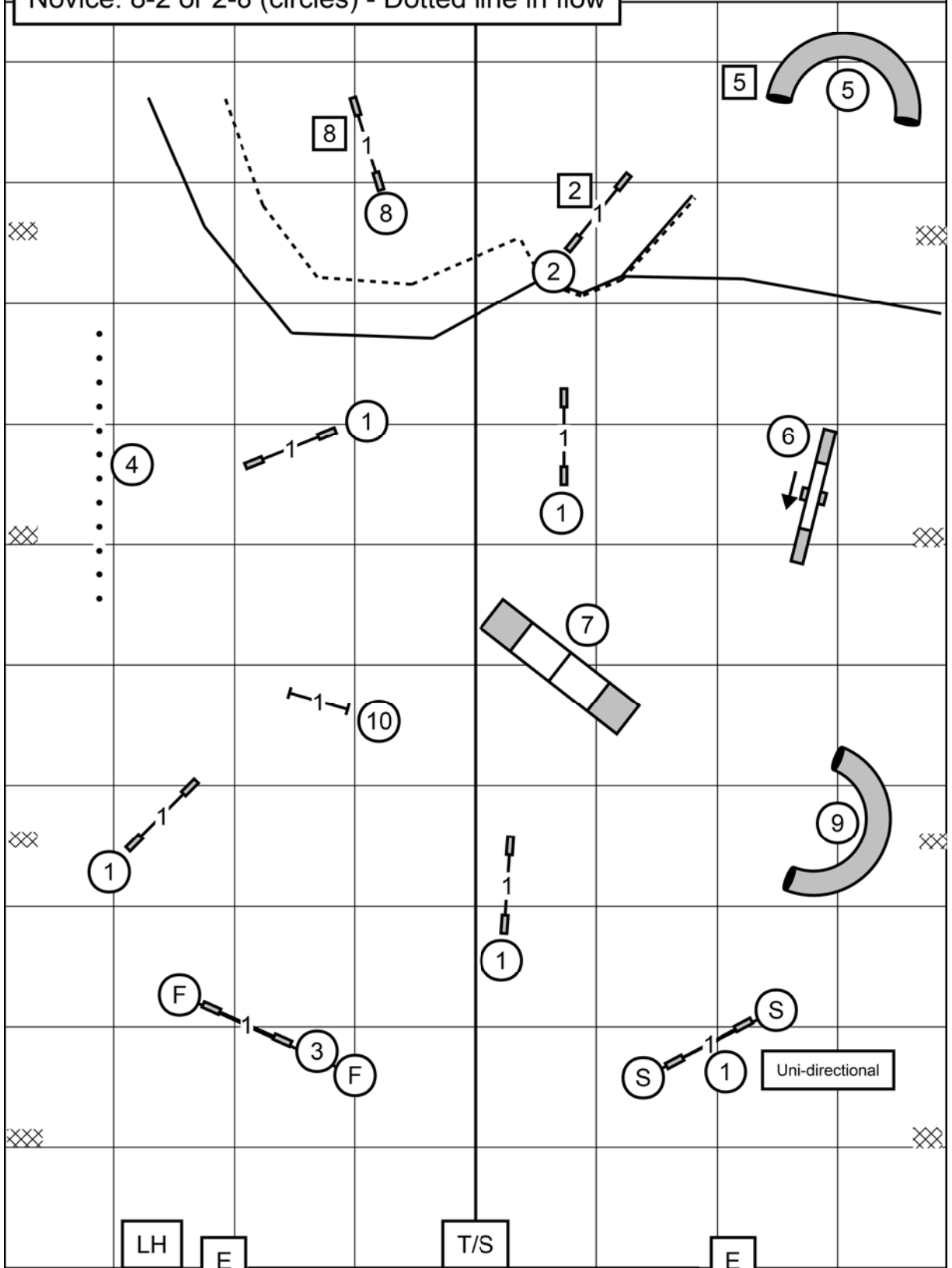
Master/Excellent Standard



York County Dog Training Club
 Lewisberry, PA
 Wednesday, November 11, 2020
 Inga L. Hooper

M/E: 8-2-5 (squares) - Solid line
 Open: 8-2 or 2-8 (circles) - Solid line in flow
 Novice: 8-2 or 2-8 (circles) - Dotted line in flow

All FAST



LH

E

T/S

E

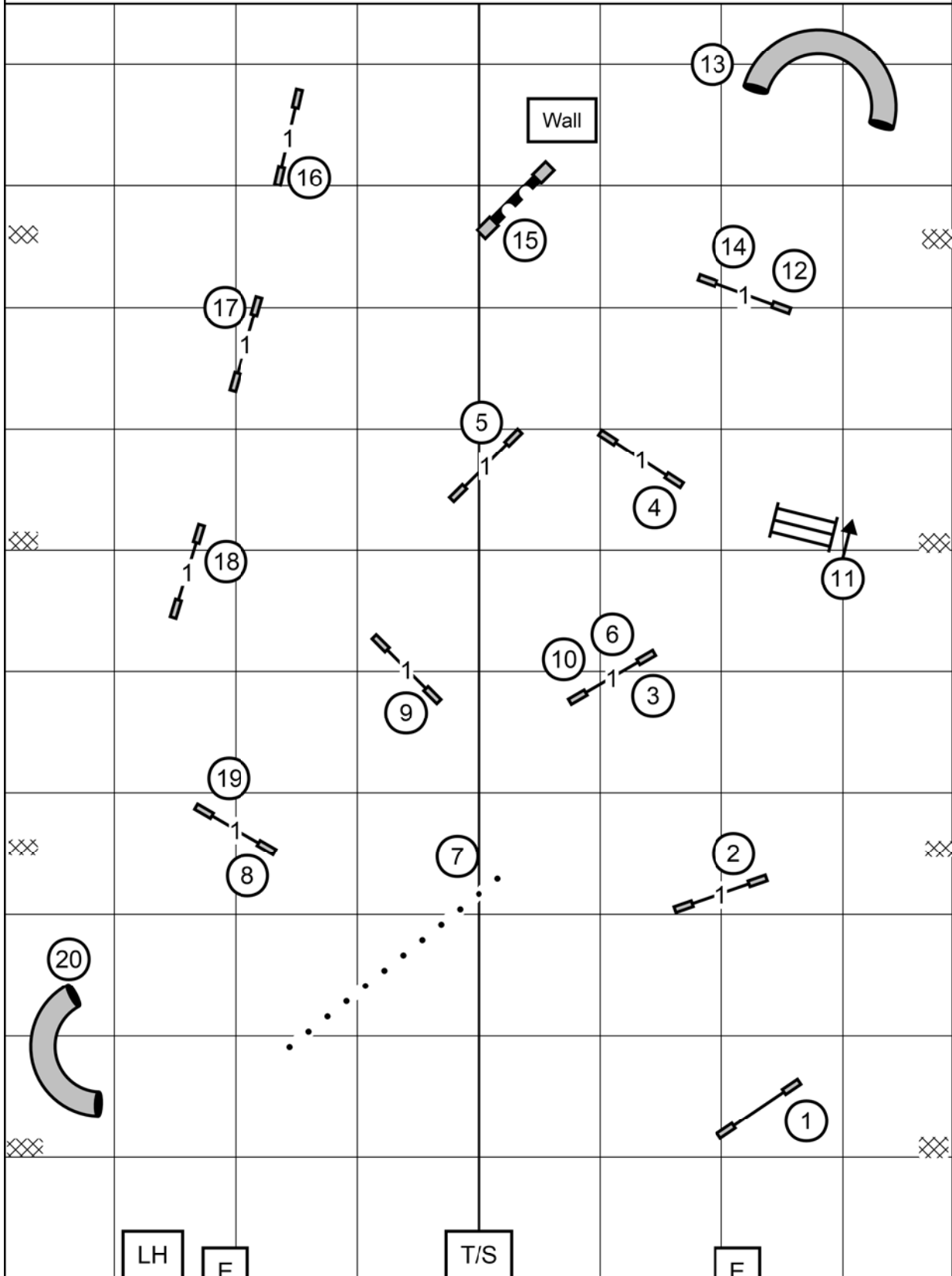
York County Dog Training Club

Lewisberry, PA

Wednesday, November 11, 2020

Inga L. Hooper

Premier JWW



LH

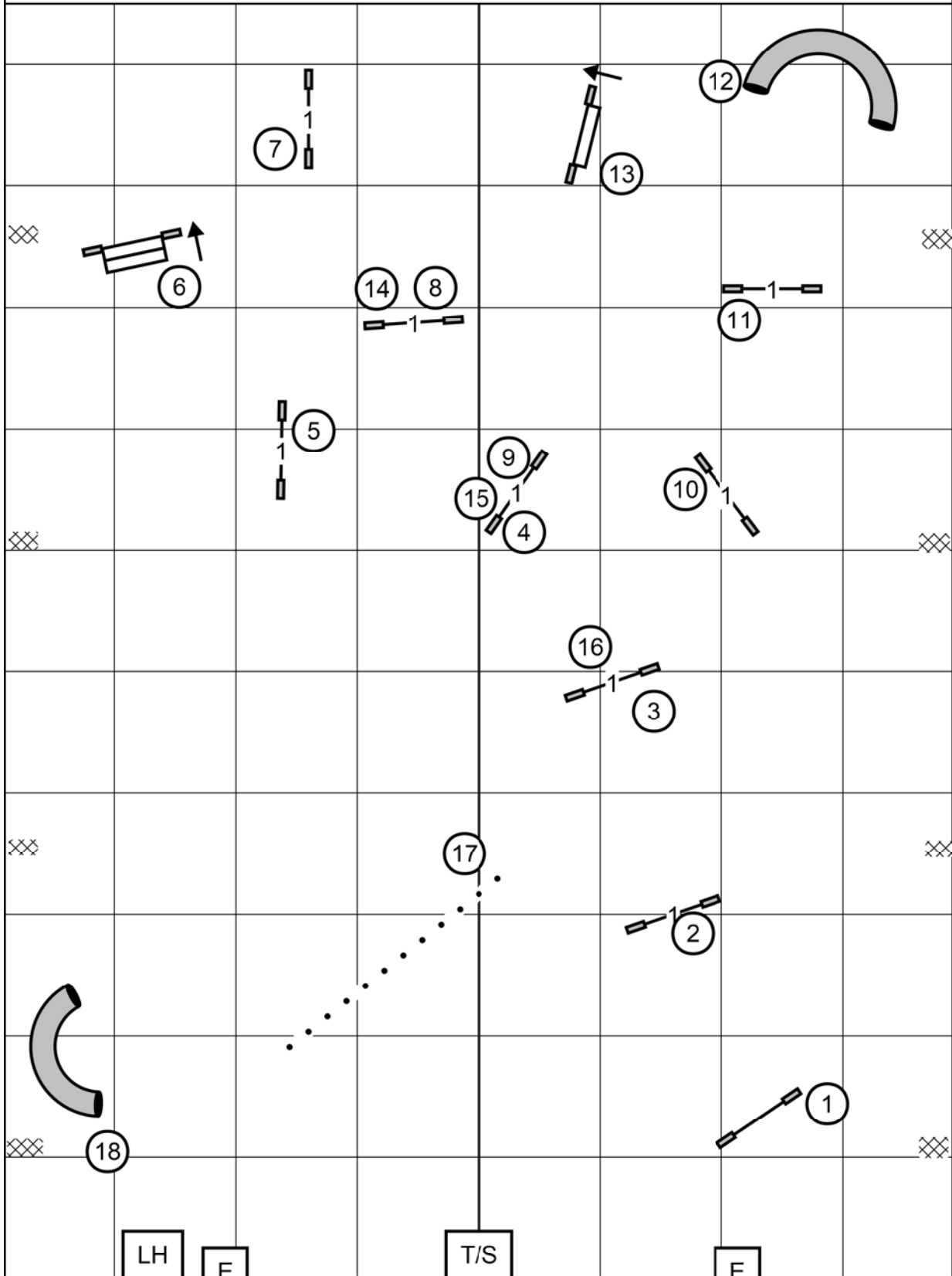
E

T/S

E

York County Dog Training Club
Lewisberry, PA
Wednesday, November 11, 2020
Inga L. Hooper

Master/Excellent JWW



LH

E

T/S

E

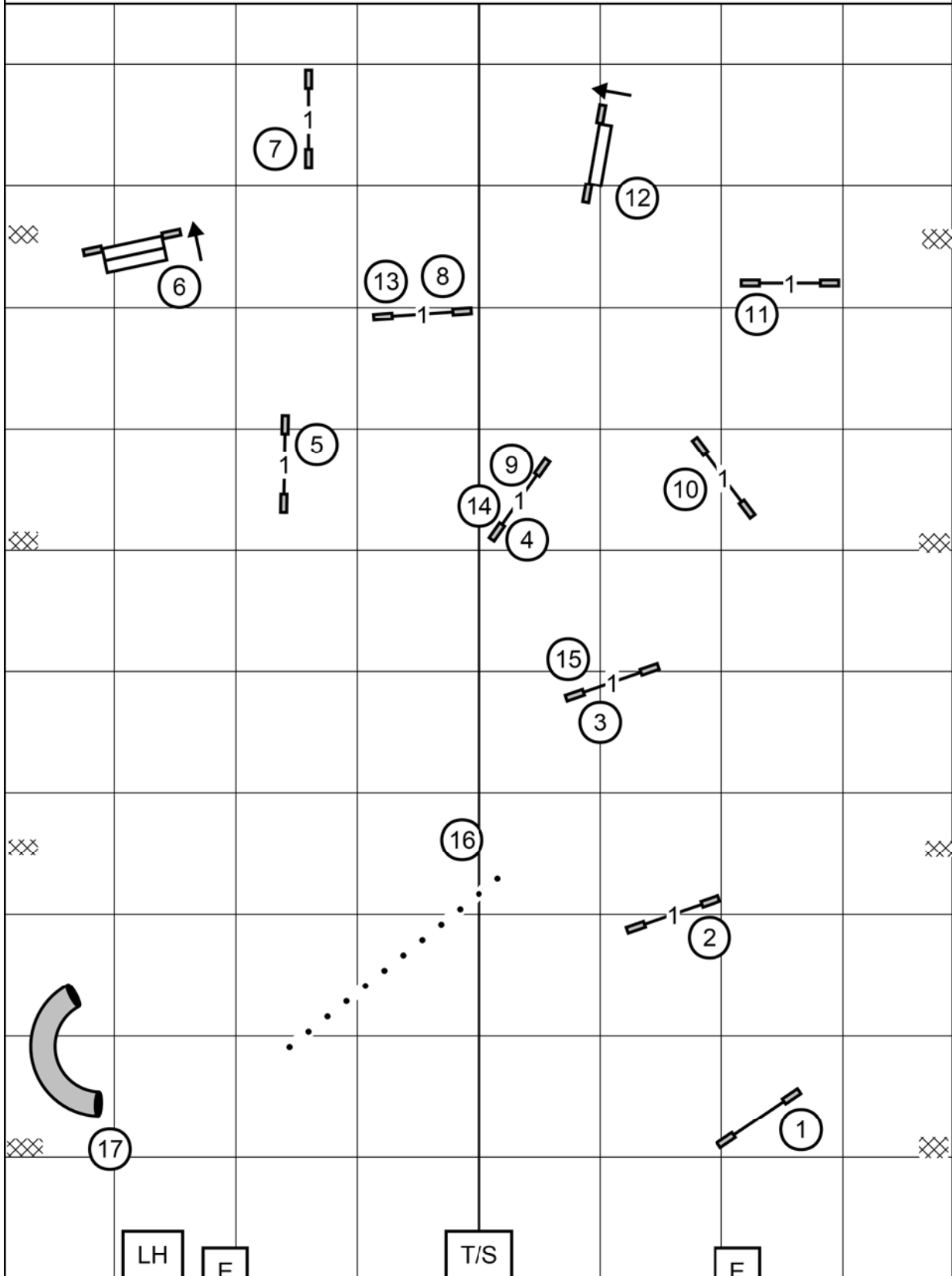
York County Dog Training Club

Lewisberry, PA

Wednesday, November 11, 2020

Inga L. Hooper

Open JWW



LH

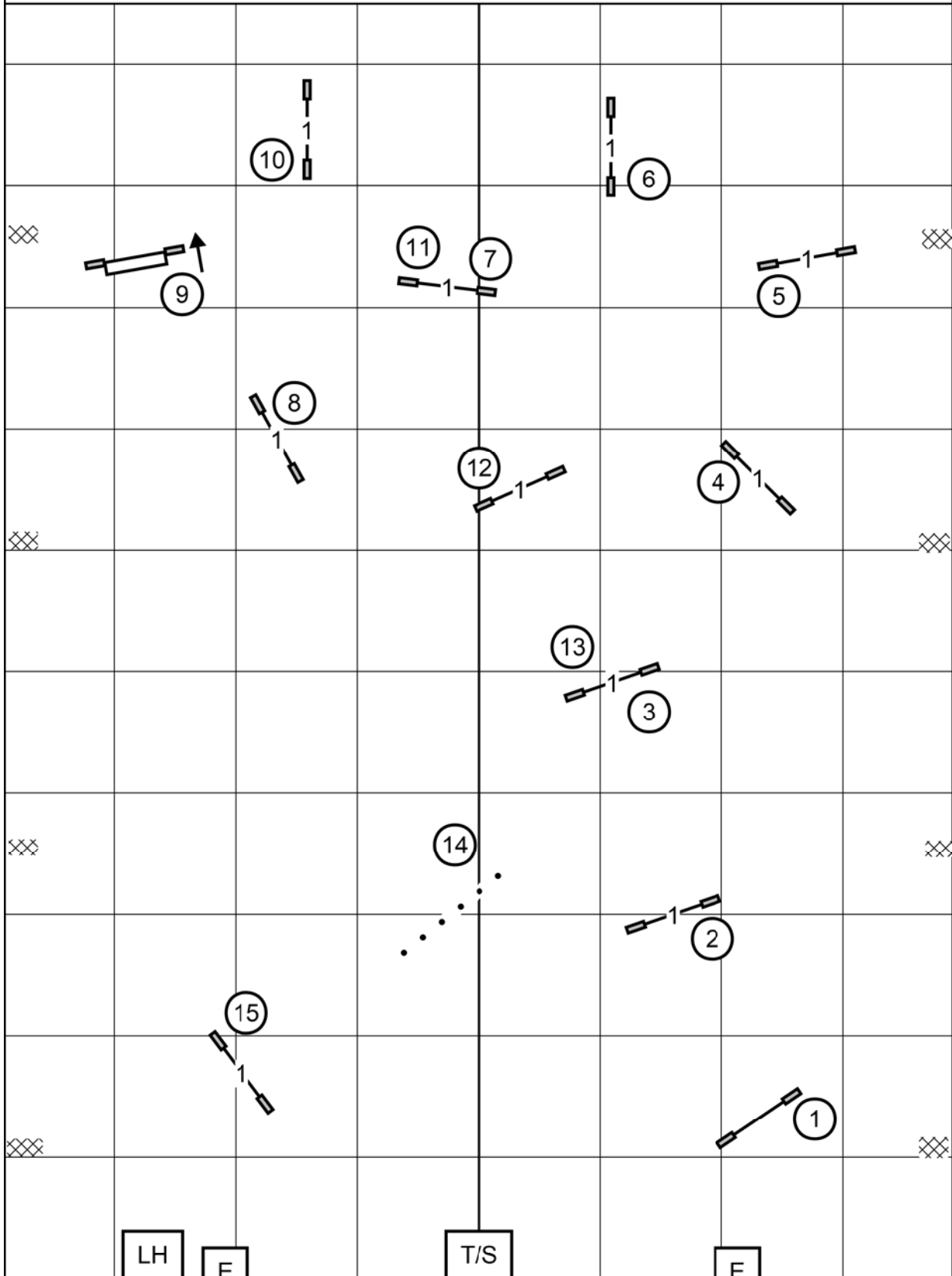
E

T/S

E

York County Dog Training Club
Lewisberry, PA
Wednesday, November 11, 2020
Inga L. Hooper

Novice JWW



LH

E

T/S

E

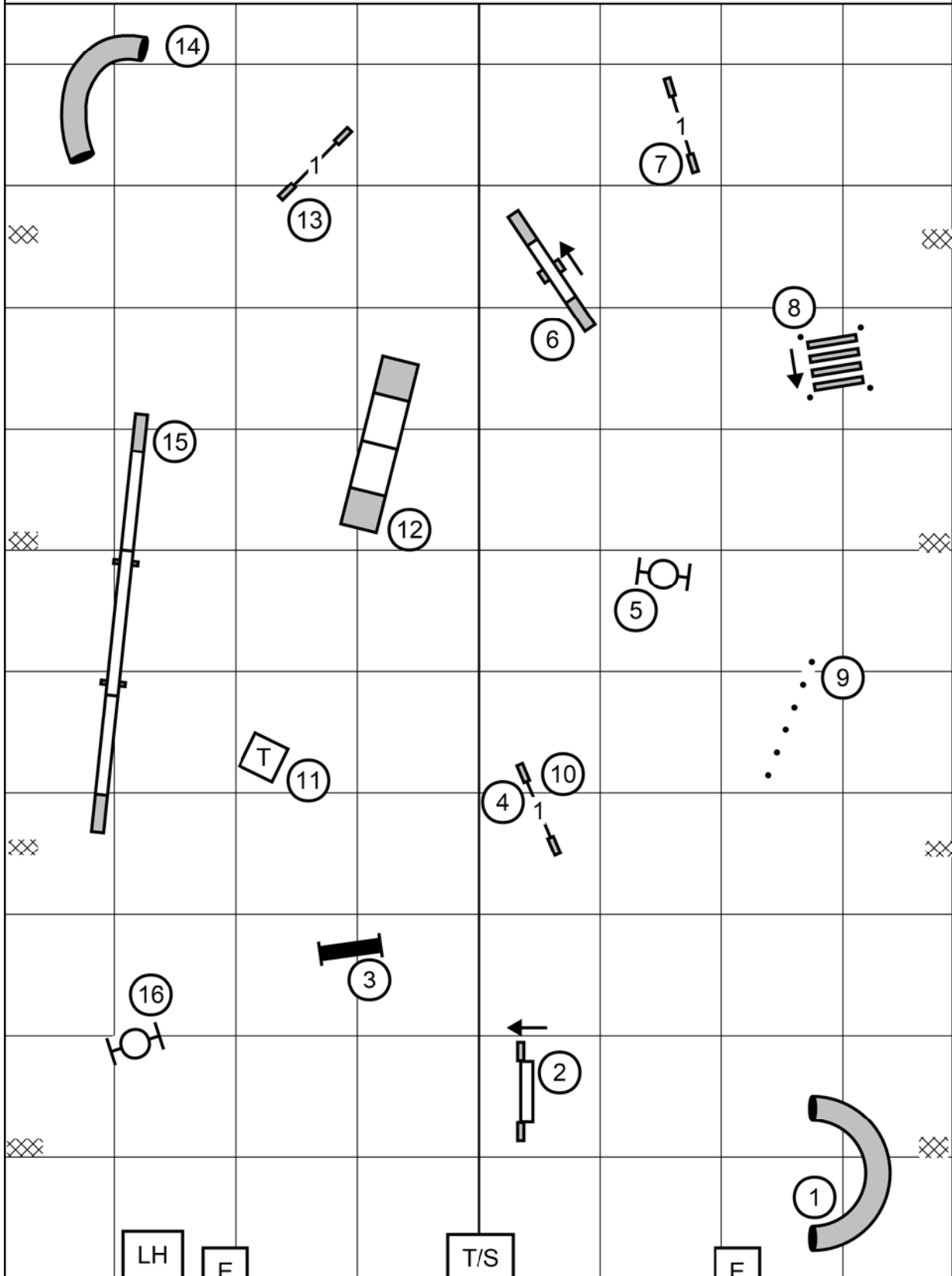
York County Dog Training Club

Lewisberry, PA

Wednesday, November 11, 2020

Inga L. Hooper

Novice Standard



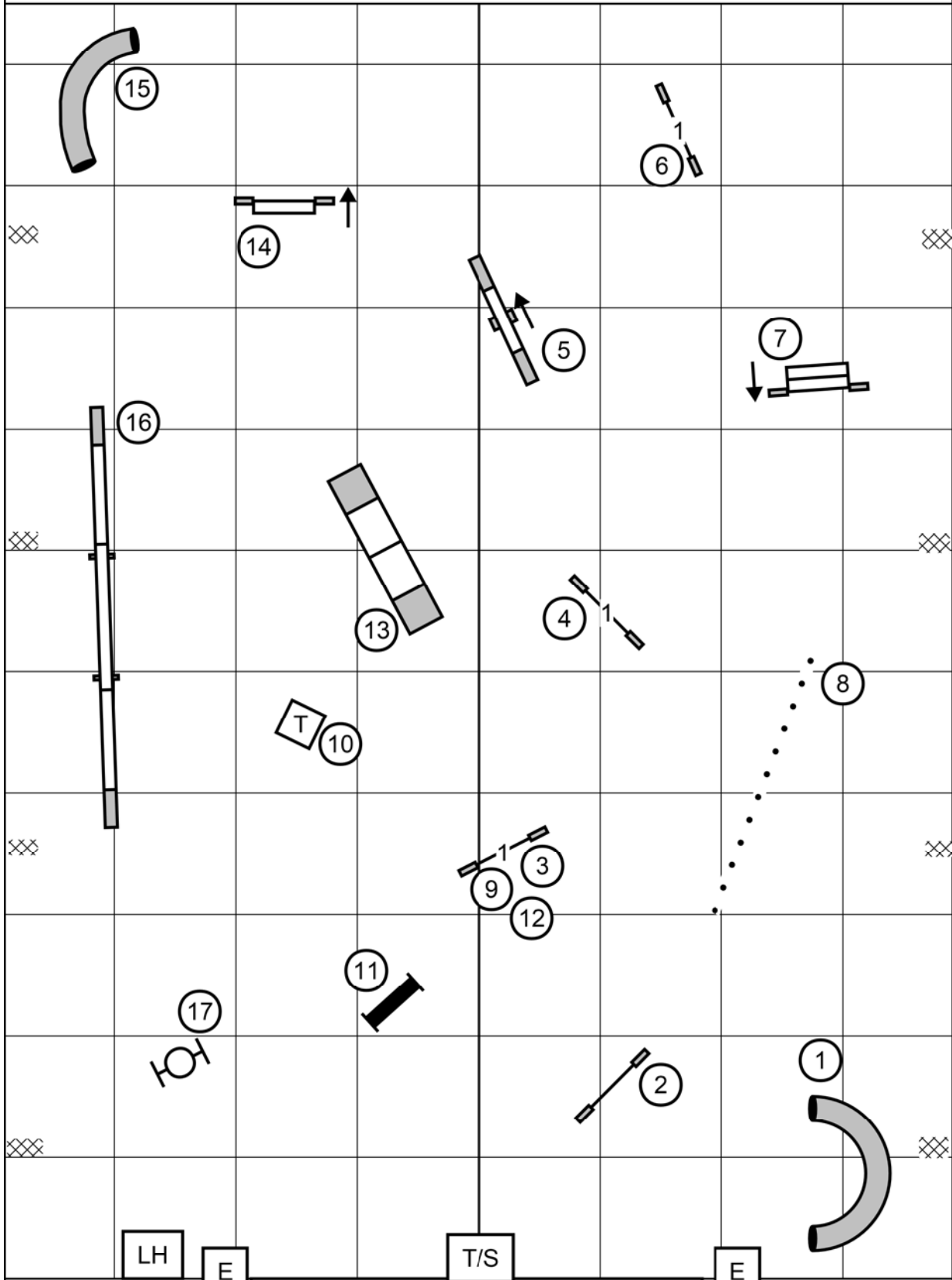
York County Dog Training Club

Lewisberry, PA

Wednesday, November 11, 2020

Inga L. Hooper

Open Standard



York County Dog Training Club

Lewisberry, PA

Wednesday, November 11, 2020

Inga L. Hooper